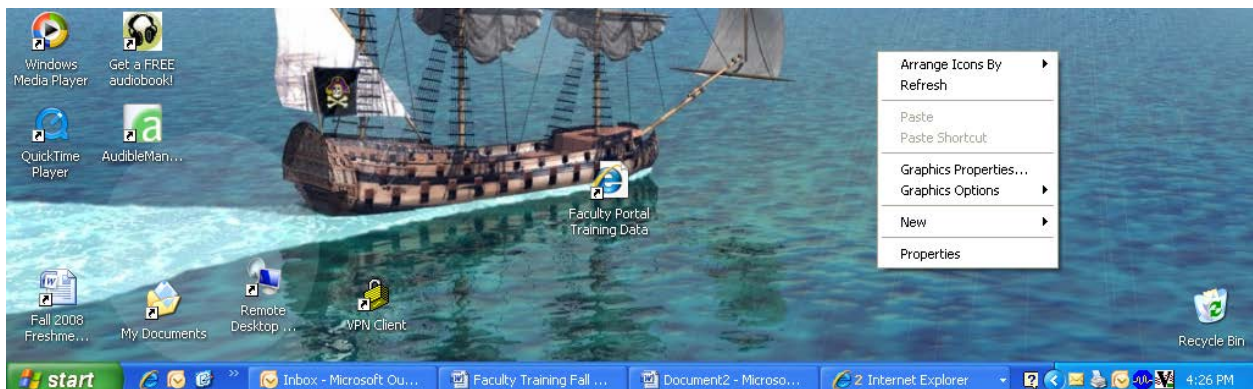


Laptop to Projector Connectivity Procedure

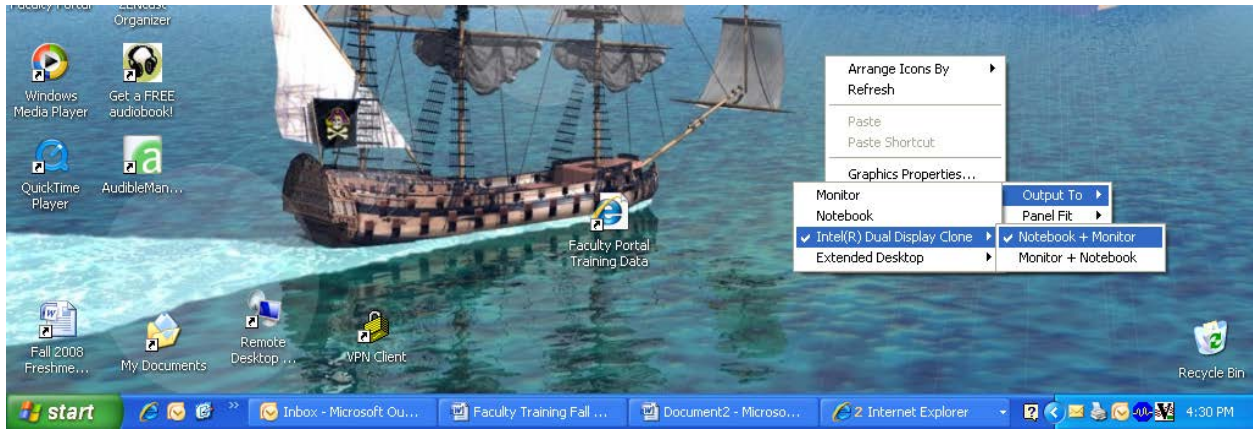
Make sure the projector cord is plugged into the monitor output of the laptop. Locate a blank area on the desktop. If programs are currently open, either minimize or close them out.



Position the arrow on any blank area of the desktop, making sure not to hover over any shortcut. Click the right mouse button and an action menu will appear.



Click on → Graphic Options → Output To → Intel® Dual Display Clone
→ Notebook + Monitor



The computer should now display through the projector. This procedure must be followed every time the computer is connected to the projector.